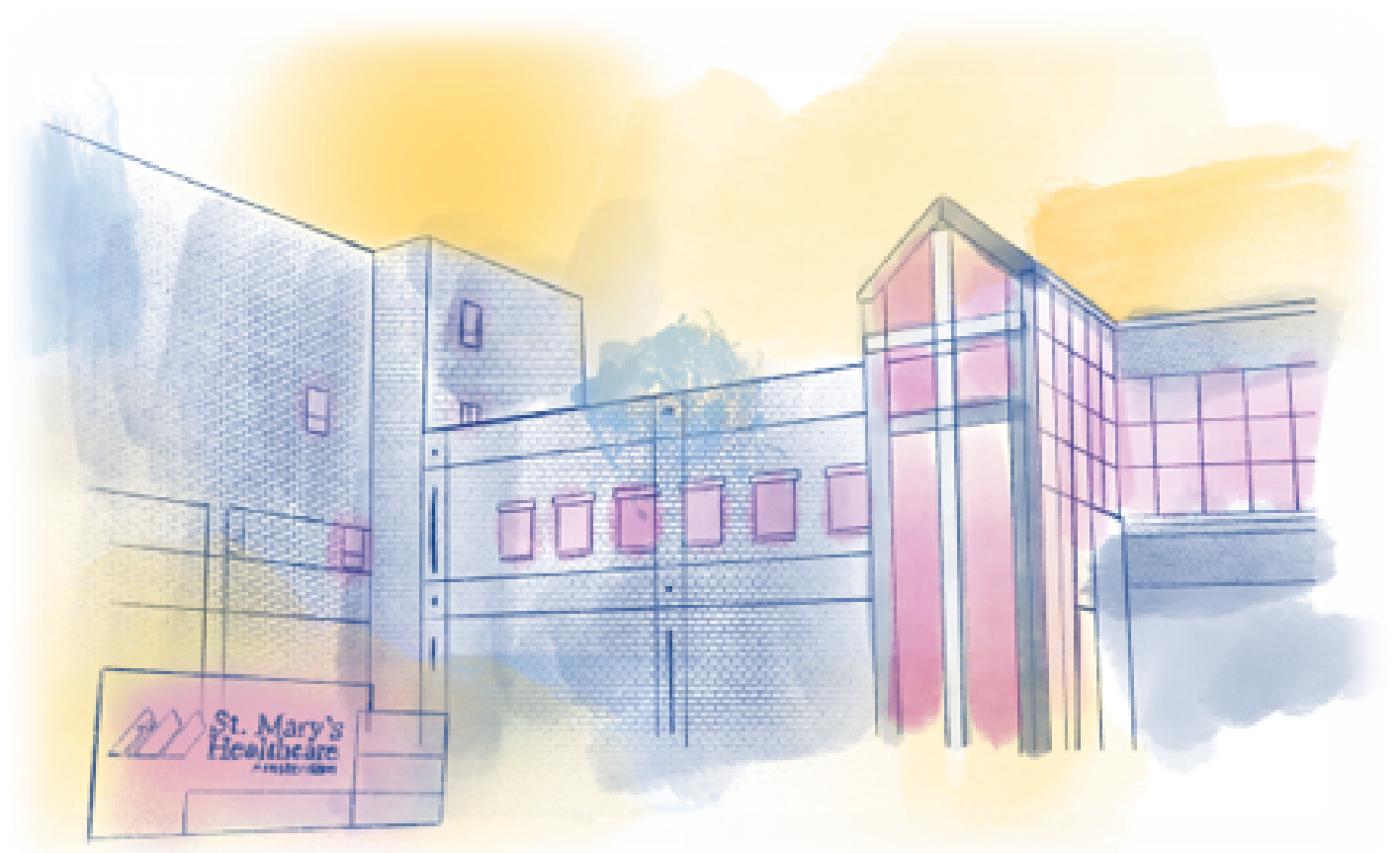


# Sponsorship Proposal

Prepared for:



# Together, we can.

As the new Executive Director for the Foundation of St. Mary's Healthcare, I'm excited to be part of an organization deeply committed to providing high-quality care to our friends and neighbors in Fulton and Montgomery counties. St. Mary's has been a cornerstone of the community for over 120 years, and our dedicated team continues to uphold our mission of exceptional, compassionate care while adapting to meet the evolving needs of our patients.

**2024**  
at a glance

Our President and CEO, Jeff Methven, often speaks about the vital synergy between a hospital and its community. At St. Mary's, we actively work with local organizations and residents to address community health needs, leveraging each other's strengths to achieve better health outcomes for the entire population. This collaboration results in a positive impact not only for the hospital but for the community as a whole, where **our combined efforts produce a far greater effect than either could achieve alone.**

**462,000**  
Outpatients

Each year, St. Mary's hosts two signature events – the Gala and the Golf Classic. This year marks the 49th Annual Gala, and we invite you to join us for *An Aloha Affair*. The historic Sanford Stud Farm in Amsterdam will be transformed into a tropical oasis for an evening of delicious food, live music, dancing and more. Most importantly, this event raises critical funds to support St. Mary's emergency and urgent care services.

**25,000**  
ER Patients

We'll welcome fall with our Golf Classic at the scenic Amsterdam Municipal Golf Course. This event not only offers an enjoyable day of golf but also helps raise funds that support the advancement of careers in healthcare.

The efforts of everyone involved in both of these events—sponsors, participants, and volunteers—are a direct reflection of the powerful synergy between St. Mary's Healthcare and the community. **Together, we make a collective impact that ensures we can continue to grow, evolve, and meet the health needs of our neighbors.**

**400**  
Babies Delivered

Enclosed, you will find information on our 2025 event sponsorship opportunities. **We are seeking partnerships with organizations that share our commitment to strengthening the community,** especially by addressing the needs of the most vulnerable among us. Your tax-deductible sponsorship is not only a great way to gain visibility for your company, but also a chance to be part of a larger mission—working together to create lasting change in our community.

**1,600**  
Employees



With gratitude,

A handwritten signature in black ink that reads "Gilli Hachey".

Gilli Hachey  
Executive Director  
Foundation

The Foundation of St. Mary's Healthcare and the St. Mary's Healthcare Auxiliary invite you to our

# 49<sup>th</sup> Annual Gala



## *An Aloha Affair*

A Night in the Tropics

Join us on **Thursday, August 14**, for an escape to paradise. We are proud to bring the St. Mary's gala back to the historic **Sanford Stud Farm**. Island enthusiasts will delight in having a little slice of paradise right here in the city of Amsterdam!

Last year, more than 350 community members attended this event, and we anticipate that number to grow this year. We hope you will join us for a fun-filled night of live music performed by Grand Central Station, dancing, delicious food served by Union Hall Inn, exciting raffles, silent auction, and more! Event proceeds will benefit St. Mary's Healthcare urgent care and emergency services.

Like an all-inclusive destination vacation, our gala sponsorship packages offer all the perks!

Come together to celebrate and allow us to say *Mahalo* for supporting your local, independent, community hospital.



49th Annual Gala

# Sponsorship Opportunities



These top sponsorship packages also include:

- Name on invitation
- Professional group photo
- Recognition on social media (6,000+ followers)
- Digital ad
- Logo on event page on St. Mary's website
- Logo on Thank You ad

## Aloha Sponsor

\$15,000

- Admission for 12
- VIP experience including:
  - 2 reserved tables
  - 2 complimentary bottles of champagne
  - 2 complimentary drink tickets per guest
- Custom gift
- 2 page, inside front cover, color ad in program
- Logo featured on tickets
- Logo prominently displayed at venue and registration area
- Recognition during speaking engagement
- Band mentions

## Mahalo Sponsor

\$10,000

- Admission for 10
- VIP experience including:
  - 1 reserved table
  - 2 complimentary bottles of champagne
  - 2 complimentary drink tickets per guest
- Custom gift
- Full page, inside back cover, color ad in program
- Logo prominently displayed at all food stations
- Band mentions

## Tiki Sponsor

\$5,000

- Admission for 8
- VIP experience including:
  - 1 reserved table
  - 2 complimentary bottles of wine
  - 1 complimentary drink ticket per guest
- Full page, color ad in program
- Logo prominently displayed at coffee and cocktail bars





49th Annual Gala

# Sponsorship Opportunities



## Hula Sponsor

**\$2,500**

- Admission for 6
- VIP Experience including:
  - 2 reserved high-top tables
  - 1 complimentary drink ticket per guest
- Half page, color ad in program
- Logo prominently displayed near dance floor

These sponsorship packages also include:

- Name on invitation
- Recognition on social media (6,000+ followers)
- Digital ad
- Logo on event page on St. Mary's website
- Logo on Thank You ad

## Island Sponsor

**\$1,000**

- Admission for 4
- VIP Experience including:
  - 1 reserved high-top table
  - 1 complimentary drink ticket per guest
- 1/4 page, color ad in program



**Digital Ad Only**

### Digital ads are available for \$100!

Your logo/name and custom message will be featured in a rotation on two screens during the event. A digital ad is a great way for you or your organization to showcase your support for St. Mary's! \$100 per ad. Sponsorship benefits not included.

# We hope to see you there!





# Annual Golf Classic

Join us for our annual St. Mary's Healthcare Golf Classic on **Thursday, October 2**, at the city's beautiful **Amsterdam Municipal Golf Course**.

Last year, more than 80 golfers, sponsors, community members, volunteers, and associates came together on a beautiful fall day for a game of golf, good food, contests, raffles, and more! This year, we expect an even larger turnout and have already put in our order for perfect golf weather.

Proceeds from the tournament will assist St. Mary's associates interested in advancing their careers.



Golf Classic

# Sponsorship Opportunities

**Each golfer package includes:**

- Green fees
- Cart fee
- Lunch
- On-course food & drink
- Post-tournament reception
- Complimentary beverage
- High-quality souvenir

## Eagle Sponsor

**\$10,000**

- Exclusive Sponsor
- Name used in conjunction with “St. Mary’s Healthcare Golf Classic”
- Logo/Name on golfer gift
- Two foursomes (\$1,600 value)
- Logo prominently displayed at Clubhouse
- Recognition on social media
- Logo on event page on St. Mary’s website
- Option to include a branded item for golfers

## Major Sponsor

**\$5,000**

- One foursome (\$800 value)
- Logo on banner, prominently displayed on course
- Logo on score cards
- Logo prominently displayed at Clubhouse
- Recognition on social media
- Logo on event page on St. Mary’s website
- Option to include a branded item for golfers

## Clubhouse Sponsor

**\$2,500**

- One foursome (\$800 value)
- Logo prominently displayed at Clubhouse
- Recognition on social media
- Logo on event page on St. Mary’s website

Golf Classic

# Sponsorship Opportunities

Each golfer package includes:

- Green fees
- Cart fee
- Lunch
- On-course food & drink
- Post-tournament reception
- Complimentary beverage
- High-quality souvenir

## Refreshment Cart Sponsor

**\$1,500**

- Two players (\$400 value)
- Logo prominently displayed on beverage carts
- Logo displayed at Clubhouse
- Recognition on social media
- Logo on event page on St. Mary's website

## A Par Above Sponsor

**\$1,000**

- Two players (\$400 value)
- Logo prominently displayed at lunch, post-tournament reception, or on drink tickets
- Corporate name displayed at Clubhouse
- Recognition on social media

## Contest Sponsor

**\$500**

- Logo prominently displayed at respective contest
- Corporate name displayed at Clubhouse

## Hole/Tee Sponsor

**\$250**

- Logo prominently displayed at designated hole/tee

# THANK YOU for Your Support of Our 2024 Signature Events

The St. Mary's Healthcare 48<sup>th</sup> Annual Gala and Annual Memorial Golf Classic would not have been possible without the generosity of these sponsors and donors!

The Foundation of St. Mary's Healthcare 



Millennium Medical  
IMAGING



Black Bear  
Wine & Spirits /  
Hardies Electric



**BBL**  
plan | design | build



ECLIPSE INSIGHTS

CHIMERA

Gary & Sylvia Howard

LEMERYGREISLERLLC  
ATTORNEYS AT LAW



Dr. Adam  
Snider



St. Mary's  
Medical  
Staff Office



HARRIS BEACH  
ATTORNEYS AT LAW  
*Discover True Engagement\**



St. Mary's  
Anesthesia  
Department



Greg & Beth Abbattisti  
Antonucci Foods  
Bond Schoeneck & King, PLLC  
Margaret & Patrick Brodie  
Bernard & Linda Burns  
John & Chris Carey  
Charles Carrow & Julieann Diamond-Carrow  
CDPHP  
Chad Majewski Real Estate  
Dr. & Mrs. James Charland  
Community Bank  
Cope Fedullo Medical Services, LLP  
Mr. & Mrs. John & Winnie Daly  
Patrick & Theresa DeCarlo  
DeGiulio Brothers Flooring  
Dr. Andrew & Julie Demaree  
Dr. Robert M. Droegge & Ms. Karim Becker  
William & Sarah Eipp  
Elevate Healthcare Consultants  
Michael & Linda Estep  
Dr. Emily Etzkorn & Jerry LaMori  
Dr. John Fedullo  
Fenimore Asset Management

Garfunkel Wild, P.C.  
Dr. & Mrs. Mohammed R. Ghazi-Moghadam  
Peter & Mary Gilhooly  
Graypoint  
Habitat for Humanity Montgomery County  
Hall Render Killian Health & Lyman  
Dr. Michael & Julie Hardies  
Health Advocates Network  
Health Systems Services  
Healthcare Association of New York State  
Hill & Markes  
Hometown Health Centers  
Hyman Hayes Associates, LLC  
Imagine That Marketing & Communications  
Liberty ARC  
Lincoln Financial Group  
Dr. Russell Loeber  
Dr. & Mrs. Ronald R. Marsh  
Lisa M. Mazzoccone  
Dan & MaryPat McCune Devine  
Jeff & Amy Methven  
Monaco Cooper Lamme & Carr, PLLC  
MVP Health Care  
Nixon Peabody LLP

O'Connor O'Connor Bressee & First  
Jason & Lisa Packer  
Mike & Rocky Parisi  
Michael & Alison Pepe  
Dr. & Mrs. T. Donald Rapello  
John & Karen Sagan  
Rick & Trish Sanders  
David & Susan Santos  
John & Kelly Sawitzki  
Mr. & Mrs. Michael Schuttig  
Dr. Michael & Debbie Sheridan  
Sisters of St. Joseph  
St. Mary's Human Resources Department  
Thorn Gershon Tyman and Bonanni, LLP  
Trane Technologies  
Transamerica Retirement Solutions, Inc.  
Tremco  
TruePlan Benefit & Retirement Advisors  
Albert & Carol Turo  
Dr. Craig & Patty van Roekens  
Keith & Wendi Waters  
Zen-Do-Kai  
Ben & Lynnette Ziskin



# Together, we can make a difference.



## Contact Us



**Website**

[www.smha.org/foundation](http://www.smha.org/foundation)



**Phone**

Gilli Hachey (518) 770-7584  
Anthony Yevoli (518) 841-7478



**E-mail**

Gilli.Hachey@nysmha.org  
Anthony.Yevoli@nysmha.org



**Address**

427 Guy Park Ave  
Amsterdam, NY 12010

# Save the Date!



**THE GALA**

---

*Sanford Stud Farm*



**THE GOLF CLASSIC**

---

*Amsterdam Municipal Golf Course*







## 2025 Event Sponsorship Pledge Form

Business Name: \_\_\_\_\_

Contact Name: \_\_\_\_\_

Mailing Address: \_\_\_\_\_

Email: \_\_\_\_\_ Phone: \_\_\_\_\_

**Yes, I want to be a St. Mary's Healthcare event sponsor in 2025!**

Please select the desired sponsorship level for the 49th Annual Gala:

- Aloha Sponsor \$15,000**
- Mahalo Sponsor \$10,000**
- Tiki Sponsor \$5,000**
- Hula Sponsor \$2,500**
- Island Sponsor \$1,000**



I would like to support the gala with a digital ad only.  
*Please note, all sponsorships listed above include a digital ad.*

- Digital Ad \$100**

Please select the desired sponsorship level for the Annual Golf Classic:

- Eagle Sponsor \$10,000**
- Major Sponsor \$5,000**
- Clubhouse Sponsor \$2,500**
- Refreshment Cart Sponsor \$1,500**
- A Par Above Sponsor \$1,000**
- Contest Sponsor \$500**
- Hole/Tee Sponsor \$250**



I am unable to participate as an event sponsor this year, but in lieu of sponsorship, please accept the enclosed donation toward the Area of Greatest Need.

Signature: \_\_\_\_\_ Date: \_\_\_\_\_

### Responses requested by April 30.

Please submit your completed form and high-resolution logo to Anthony Yevoli, Foundation Assistant, at [anthony.yevoli@nysmha.org](mailto:anthony.yevoli@nysmha.org). Upon receipt, an invoice will be sent to the contact listed above.